

Cricut[®] *Cutting Guide*[™]

Created by: Megan Gravener

www.AboveRubiesStudio.com

Online Version

Proudly Presented by
Above  *Rubies*[™]
Studio

Get the Best Cut the FIRST Time

No one wants to ruin their expensive paper because their Cricut® cutting settings aren't right!

You put in your paper, guess at the speed, blade depth, and pressure settings and hit CUT only to have your Cricut tear up your nice, expensive paper.

If this happens to you (and I'm sure it has!), I feel your pain! It has happened to me many times and it's very frustrating. Don't worry, there is hope! ...

I've Done the Work For You!

It is absolutely critical to have the speed, blade depth and pressure set correctly according to the kind of paper you are cutting to get the best cut with your Cricut. Having these settings correct can turn a frustrating cut into a fun, easy one.

I created this guide to help YOU, fellow Cricut users, through the Cricut cutting process (and it doesn't matter which Cricut Machine you use).

This guide contains hundreds of different papers and materials and the best cut settings to use to get the best cuts! No more ripping or tearing your nice paper!

All of the materials listed have been tested in multiple cutting circumstances, sizes and shapes.

Meet the Creator



Hello, my name is Megan Gravener.

My love for scrapbooking led me to the Cricut and then on to the wonderful online world of tutorials.

My hope is to add value to the Cricut community with my scrapbooking, cardmaking and crafting experience. Since purchasing my Cricut, I have become obsessed with helping others learn more about their

Cricut. There are so many things you may not know about and I'm just the girl to show you how to get the most from your Cricut Machine.

**“Who can find a virtuous woman?
For her worth is far above rubies.”**

Proverbs 31:10

This verse is the goal of my life! I daily seek to be a “Proverbs 31 woman”. God is so good and has blessed my family in so many ways.

It's my prayer that I can encourage you, if only in small ways, while having a blast crafting!

Join me at www.AboveRubiesStudio.com!



How to Use this Guide

Let's start with a simple review of how this guide works. The papers and materials are listed in alphabetical order. You will also see the information just like in the example below. Here is a quick reference of what they mean:

Shape Type:

Basic Shapes are circles, letters, cards, envelopes, etc.

Intricate Shapes are flourishes, shapes with thin lines, detailed cuts, etc.

Size:

>1" indicates shapes that are greater than 1 inch at its largest point.

<1" indicates shapes that are less than 1 inch at its largest point.

Blade Type:

Regular blades come with your Cricut (they are also called "standard" cutting blades).

Deep Cut blades are sold separately and are thicker and more durable than regular blades.

Blade Depth:

Twist the top of the blade housing to set blade depth from 1 (shallow) through 6 (deep). After adjustment, ensure the arrow on the blade housing is facing forward and centered.

Speed:

The Cricut has 5 speed settings: 1 or "Low" (being the slowest), 2, 3, 4 and 5 or "Max" (being the fastest). Adjust the cutting speed using the *Speed* dial on the left side of the machine.

Pressure:

Aside from blade depth, the pressure determines how much pressure is put on your blade while cutting. The pressure may be set to 1 or "Low" (being the lightest), 2, 3, 4, 5 or "Max" (being the hardest).

Real Dial Size

By default, your Cricut will cut characters in proportion to one another. However, if you want to “break” the proportion and cut a character to the size set with the size dial, press the **Real Dial Size** key.

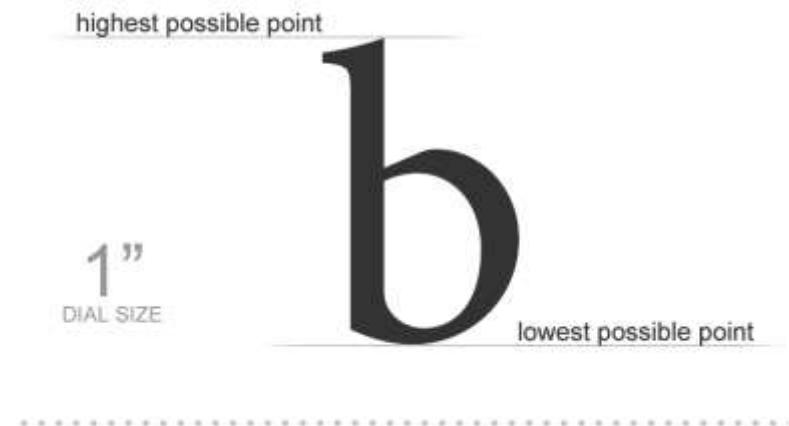
Example:

With the **Size Dial** set at 2”, a lowercase “a” will actually cut out at approximately 1” to fit proportionately with any uppercase letters. With **Real Dial Size** selected (with the size dial still set at 2”), that same lowercase “a” would cut at a full 2”.



Measurements

When making size adjustments, remember that the letter, phrase or shape you’re cutting is always measured from the lowest possible point to the highest possible point.



Test Cuts

Make “test cuts” with either **white copy paper** (similar to thin patterned paper) or on **white card stock** (similar to thicker materials and card stocks) when you’re unsure of the intricacy or detail of the cut.

These materials are also good for testing sizes. They’re inexpensive and will “save” your designer paper for what you really want to use it for! You can usually pick up a ream at your local supply store for around \$5.00 USD or less.

At the very least, these testing materials will give you a good comparison for the papers listed in this guide.

TIP: A general rule to keep in mind while using this guide is that the more intricate the cut is, the slower your speed should be. Conversely, the more basic and larger the cut is, the faster your speed can be.

Cricut Maintenance

Cutting blades typically last from 500 to 1500 cuts, depending on the kind of paper/cardstock you use. The thicker the material, the sooner the blade will begin to dull.

NOTE: It is important to keep your blades sharp by replacing them when you notice the first rip or tear (minding that you are on the right settings). Replacement blades are inexpensive and easy to change; learn more at AboveRubiesStudio.com

Cricut Maintenance

Cricut mats need to be kept in good condition as well, especially for more intricate cuts. The firmer the stick your mat has, the better. Your paper will slip less and allow the blade to navigate the paper on the mat for a smooth, clean cut.

Mats generally last between 30 and 60 full-page cuts, depending on the size of the cuts and what kind of paper/cardstock you use. It's a good idea to have a few mats and rotate using them. To extend the life of your mats even more, rotate the way you load them into the machine (bottom first, top first).

Visit AboveRubiesStudio.com for more maintenance and money saving tips!

If you find that your Cricut Mat is *too sticky* and ripping paper when you remove it, here are two tips you can try:

1. Place a sheet of computer printer paper on your mat and lift it several times to remove a little bit of the stick.
2. Use a craft knife (or the Cricut Spatula) to carefully lift and remove cut images by *scraping* them off the mat (like you would use a spatula to lift up a pancake).

If you don't have it already, I recommend getting the *Cricut Tool Kit* made by ProvoCraft. The tools included will help you to remove paper from the mat, clean up edges, remove excess pieces and more. It has proved to be very helpful.

Grams per Square Meter (GSM)

Grams per Square Meter (GSM) is a paper industry term that measures paper thickness. Using GSM will help you to determine the best cut settings for the material you will be cutting with your Cricut. You can usually find the GSM for your paper wherever you shop for paper.

If your paper isn't listed in this guide, you can use the GSM as a starting point for cut settings. Remember, you can always do "test cuts" on scraps, copy paper, or card stock to avoid wasting your good paper.

- ↪ Generally, anything that has a GSM of 10-35 has a tissue consistency. Therefore you would set the blade depth to 2, Speed on 1 or 2 and Pressure on 1 or 2.
- ↪ Lighter text weight would be around 35-70 GSM; I would recommend a blade depth of 3-4, Speed of 3 and Pressure of 3.
- ↪ Medium text weight paper is around 70-100 GSM; I would recommend a blade depth of 4-5, Speed of 3-5 (depending on intricacy), and Pressure of 3-4 (depending on intricacy).
- ↪ Heavy text weight to a light cardstock is around 100-120 GSM (Many designer papers are in this category). I would recommend a blade depth of 5, Speed of 4-5 and Pressure of 4 for larger, less intricate cuts. The more intricate the cut, the slower the speed.
- ↪ Regular Cardstock is around 120-150 GSM. Using a blade depth of 5 is good. Faster speeds and pressures are ok, too (mind the intricacy and size of the cut). I recommend using lighter pressure for intricate cuts; add in the Multi-Cut function for a cleaner cut with smaller images.

Grams per Square Meter (GSM)

- Heavy text weight to a light cardstock is around 100-120 GSM (Many designer papers are in this category). I would recommend a blade depth of 5, Speed of 4-5 and Pressure of 4 for larger, less intricate cuts. The more intricate the cut, the slower the speed.
- Regular Cardstock is around 120-150 GSM. Using a blade depth of 5 is good. Faster speeds and pressures are ok, to (mind the intricacy and size of the cut). I recommend using lighter pressure for intricate cuts; add in the Multi-Cut function for a cleaner cut for smaller images
- Thick Cardstock is around 150-200 GSM and is generally categorized as "60lb" cardstock. This cardstock usually requires the blade depth of 6. Speed and pressure can usually be set to 5. Multi-cut will need to be used on occasion, especially when making intricate cuts.
- Heavy cardstock, and greater than 200 GSM is really heavy cardstock. It falls into the "80lb" category. Stampin' Up cardstock and other cardstock makers use this weight. Use a blade depth of 6, fast speeds and heavy pressures! Many times you will need to use Multi-cut.

Above Rubies™ Studio

Inspiration and Education for Everyday Paper Crafting

— Download Free Resources —

Master Your Craft with Our Educational DVDs



The Cricut
Cutting Guide



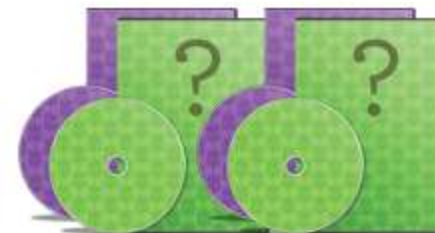
Sketch Sheets
Scrapbooks & Cards



Cricut & Gypsy
A to Z DVDs



123 Stamp
Volume 1 DVD



New Titles
Coming Soon!

Club Ruby DESIGNERS

Join the Premier Paper Craft Community at
Club Ruby Designers for Free!

Create your very own design profile, upload & showcase your designs,
connect with friends and more!



The [Cricut Cutting Guide](#) is coming to
the app store for the iPhone



Follow us on [Facebook](#)
facebook.com/aboverubiestudio



Follow us on [YouTube](#)
youtube.com/aboverubiestudio



Follow us on [Twitter](#)
twitter.com/arubies

Find us at <http://www.AboveRubiesStudio.com> and <http://www.ClubRubyDesiners.com>

Cutting Material	Shape Type	Size	Blade Type	Blade Depth	Speed	Pressure	Notes:
7 Gypsies	Basic	>1"	Regular	4	4	3	
7 Gypsies	Intricate	<1"	Regular	4	1 – 2	2 – 3	
7 Gypsies Collections Paper	Basic	>1"	Regular	4	4	3	
7 Gypsies Collections Paper	Intricate	<1"	Regular	4	1 – 2	2 – 3	
AC Card Stock	Basic	>1"	Regular	5	5	4	May need Multi-Cut (2)
AC Card Stock	Intricate	<1"	Regular	4	2	3 – 4	May need Multi-Cut (2)
AC Card Stock Specialty	Basic	>1"	Regular	5	5	4	May need Multi-Cut (2)
AC Card Stock Specialty	Intricate	<1"	Regular	4	2	3 – 4	May need Multi-Cut (2)
AC Patterned Paper	Basic	>1"	Regular	4	4	3	
AC Patterned Paper	Intricate	<1"	Regular	4	1 – 2	2 – 3	
Aluminum Metal 36g	Basic	>1"	Deep Cut	4	4	5	
Aluminum Metal 36g	Intricate	<1"	Deep Cut	?	?	?	Haven't tested small designs
American Crafts Paper	Basic	>1"	Regular	4	4	3	
American Crafts Paper	Intricate	<1"	Regular	4	1 – 2	2	May need Multi-Cut (2)
American Crafts Paper Card Stock	Basic	>1"	Regular	5	5	4	May need Multi-Cut (2)
American Crafts Paper Card Stock	Intricate	<1"	Regular	4	2	3 – 4	May need Multi-Cut (2)
American Crafts Paper Designer Paper	Basic	>1"	Regular	4	4	3	
American Crafts Paper Designer Paper	Intricate	<1"	Regular	4	1 – 2	2 – 3	
American Traditions Solid Color Card Stock	Basic	>1"	Regular	5	5	5	
American Traditions Solid Color Card Stock	Intricate	<1"	Regular	5	3	4	
Amy Butler (by K&Co.)	Basic	>1"	Regular	4	4	3	
Amy Butler (by K&Co.)	Intricate	<1"	Regular	4	1 – 2	2 – 3	
Anna Griffin Design Paper	Basic	>1"	Regular	5	5	4	
Anna Griffin Design Paper	Intricate	<1"	Regular	3	1	2	May need Multi-Cut (2)
Anna Griffin Flocked Paper	Basic	>1"	Regular	5	5	4	
Anna Griffin Flocked Paper	Intricate	<1"	Regular	3	1	2	May need Multi-Cut (2)
ANW Crestwood	Basic	>1"	Regular	5	5	4	
ANW Crestwood	Intricate	<1"	Regular	4	2	3	
Around The Block	Basic	>1"	Regular	5	5	4	

Cutting Material	Shape Type	Size	Blade Type	Blade Depth	Speed	Pressure	Notes:
Around The Block	Intricate	<1"	Regular	4	2	3	
Array 65lb Card Stock	Basic	>1"	Regular	5	5	4	May need Multi-Cut (2)
Array 65lb Card Stock	Intricate	<1"	Regular	4	2	3 – 4	May need Multi-Cut (2)
Art Warehouse	Basic	>1"	Regular	5	5	4	
Art Warehouse	Intricate	<1"	Regular	3	1	2	
Autumn Leaves	Basic	>1"	Regular	4	4	3	
Autumn Leaves	Intricate	<1"	Regular	4	1 – 2	2 – 3	
Avery Cards/Card Stock	Basic	>1"	Regular	5	5	4	
Avery Cards/Card Stock	Intricate	<1"	Regular	4	2	3 – 4	
Basic Grey	Basic	>1"	Regular	5	5	4	
Basic Grey	Intricate	<1"	Regular	4	2	3	
Bazzil Cardstock	Basic	>1"	Regular	5	5	4	
Bazzil Cardstock	Intricate	<1"	Regular	4	2	3 – 4	
Bazzil Emboss	Basic	>1"	Regular	5	5	4	
Bazzil Emboss	Intricate	<1"	Regular	4	2	3 – 4	
Bazzill Basics Paper	Basic	>1"	Regular	5	5	4	
Bazzill Basics Paper	Intricate	<1"	Regular	4	2	3 – 4	
Bella Blvd.	Basic	>1"	Regular	4	4	3	
Bella Blvd.	Intricate	<1"	Regular	4	1 – 2	2 – 3	
Best Creations Inc	Basic	>1"	Regular	5	5	4	
Best Creations Inc	Intricate	<1"	Regular	4	2	3 – 4	
Best Occasions Glitter Paper	Basic	>1"	Regular	5	5	4 – 5	
Best Occasions Glitter Paper	Intricate	<1"	Regular	5	3	4	
Best Occasions Metallic Paper	Basic	>1"	Regular	5	5	4 – 5	
Best Occasions Metallic Paper	Intricate	<1"	Regular	5	3	4	
Best Occasions Solid Paper	Basic	>1"	Regular	5	4 – 5	4	
Best Occasions Solid Paper	Intricate	<1"	Regular	5	2 – 3	4	
Bo Bunny	Basic	>1"	Regular	5	5	4	
Bo Bunny	Intricate	<1"	Regular	4	2	3	

Cutting Material	Shape Type	Size	Blade Type	Blade Depth	Speed	Pressure	Notes:
Bo Bunny Designer	Basic	>1"	Regular	5	5	4	
Bo Bunny Designer	Intricate	<1"	Regular	3	1	2	
Bo Bunny Reversible Heavy Weight	Basic	>1"	Regular	5	5	4	
Bo Bunny Reversible Heavy Weight	Intricate	<1"	Regular	3	1	2	
Brenda Walton	Basic	>1"	Regular	5	5	4	
Brenda Walton	Intricate	<1"	Regular	3	2 – 3	3	
Cannon Paper	Basic	>1"	Regular	5	\	4	
Cannon Paper	Intricate	<1"	Regular	3	1	2	
Canson	Basic	>1"	Regular	5	4 – 5	4	
Canson	Intricate	<1"	Regular	3	1	2	
Cardboard Paper Pack Backing	Basic	>1"	Deep Cut	3 – 4	4 – 5	4 – 5	
Cardboard Paper Pack Backing	Intricate	<1"	Deep Cut	3	2 – 3	4 – 5	
Carolee's Creations	Basic	>1"	Regular	5	5	4	
Carolee's Creations	Intricate	<1"	Regular	4	2	4	
Chatterbox Inc.	Basic	>1"	Regular	5	5	4	
Chatterbox Inc.	Intricate	<1"	Regular	4	1	3	
Cherry Arte	Basic	>1"	Regular	5	5	4	
Cherry Arte	Intricate	<1"	Regular	4	1	3	
Chipboard up to 1.50mm thick	Basic	>1"	Deep Cut	3	4	4	Tape all sides w/ Multi-Cut (4)
Chipboard up to 1.50mm thick	Intricate	<1"	Deep Cut	3	2 – 3	4	Very difficult! Patience and Multi-Cut req.
Christine Adolph Designer Paper	Basic	>1"	Regular	4	5	4	
Christine Adolph Designer Paper	Intricate	<1"	Regular	4	1 – 2	3	
Close To My Heart	Basic	>1"	Regular	5	5	4	
Close To My Heart	Intricate	<1"	Regular	3	1	2	
Cloud 9	Basic	>1"	Regular	4	4	3	
Cloud 9	Intricate	<1"	Regular	4	1	2	May need Multi-Cut (2)
Club Scrap	Basic	>1"	Regular	4 – 5	5	5	
Club Scrap	Intricate	<1"	Regular	4 – 5	1 – 2	3 – 4	Multi-Cut (2)
Collage Press Designs	Basic	>1"	Regular	5	5	4	

Cutting Material	Shape Type	Size	Blade Type	Blade Depth	Speed	Pressure	Notes:
Collage Press Designs	Intricate	<1"	Regular	4	2	4	
Construction Paper	Basic	>1"	Regular	-	-	-	Not Recommended to Use by Provo Craft
Construction Paper	Intricate	<1"	Regular	-	-	-	Not Recommended to Use by Provo Craft
Con-tact Paper	Basic	>1"	Regular	3 – 4	4 – 5	4	
Con-tact Paper	Intricate	<1"	Regular	3 – 4	2 – 3	4	
Coredinations Core Couture	Basic	>1"	Regular	5	5	5	Multi-Cut (2)
Coredinations Core Couture	Intricate	<1"	Regular	5	2	3	Multi-Cut (2 or 3)
Coredinations Coressentials	Basic	>1"	Regular	5	5	5	
Coredinations Coressentials	Intricate	<1"	Regular	4	2	3	Multi-Cut (2)
Coredinations Designers	Basic	>1"	Regular	5	5	5	
Coredinations Designers	Intricate	<1"	Regular	4	2	3	Multi-Cut (2)
Cork Board (Very thin only)	Basic	>1"	Deep Cut	3	4	4	Multi-Cut (up to 4)
Cork Board (Very thin only)	Intricate	<1"	Deep Cut	3	2 – 3	4	Multi-Cut (up to 4)
Cosmo Cricut	Basic	>1"	Regular	5	4 – 5	4	
Cosmo Cricut	Intricate	<1"	Regular	5	2	3	May need Multi-Cut (2)
Cotton Made Paper (Usually thick)	Basic	>1"	Regular	5	4 – 5	3 – 4	
Cotton Made Paper (Usually thick)	Intricate	<1"	Regular	4	2	2 – 3	May need Multi-Cut (2)
Couture Cardstock	Basic	>1"	Regular	5	5	5	
Couture Cardstock	Intricate	<1"	Regular	4	2	3	Multi-Cut (2)
Couture Vellum	Basic	>1"	Regular	3	2	3	Multi-Cut (2)
Couture Vellum	Intricate	<1"	Regular	3	2	2	Multi-Cut (2)
Craft Foam	Basic	>1"	Deep Cut	5	2	4 – 5	Tape all sides w/ Multi-Cut (2)
Craft Foam	Intricate	<1"	Deep Cut	4	1 – 2	4	Tape all sides w/ Multi-Cut (2)
Crate Paper, Inc.	Basic	>1"	Regular	5	5	4	
Crate Paper, Inc.	Intricate	<1"	Regular	4	1 – 2	3	
Crayola 12x12 Paper	Basic	>1"	Regular	5	5	4	
Crayola 12x12 Paper	Intricate	<1"	Regular	4	1 – 2	3	
Creative Cafe	Basic	>1"	Regular	5	5	4	
Creative Cafe	Intricate	<1"	Regular	4	1	2	May need Multi-Cut (2)

Cutting Material	Shape Type	Size	Blade Type	Blade Depth	Speed	Pressure	Notes:
Creative Cafe Felt Sheets	Basic	>1"	Deep Cut	6	3	3 – 4	Multi-Cut (3) Sticky mat required!
Creative Cafe Felt Sheets	Intricate	<1"	Deep Cut	-	-	-	Don't Do! Shredded every test!
Creative Imaginations Signature Collection	Basic	>1"	Regular	4	4 – 5	4	
Creative Imaginations Signature Collection	Intricate	<1"	Regular	4	2	3	
Creative Memories Patterned Paper	Basic	>1"	Regular	4	3	4	
Creative Memories Patterned Paper	Intricate	<1"	Regular	5	1	3	Use caution; small cuts tear easily
Creative Memories Solid Colors	Basic	>1"	Regular	5	5	5	
Creative Memories Solid Colors	Intricate	<1"	Regular	5	2 – 3	4	
Creative Metal Walnut Hollow	Basic	>1"	Deep Cut	4	3	3	
Creative Metal Walnut Hollow	Intricate	<1"	Deep Cut	3 – 4	1	2	
Cricut Cuttables Stamps	Basic	>1"	Deep Cut	3 – 4	4 – 5	4 – 5	
Cricut Cuttables Stamps	Intricate	<1"	Deep Cut	3	2 – 3	4 – 5	
Cricut Embossing Folders	Intricate	<1"	Deep Cut	4	1 – 2	4	May need Multi-Cut (2)/sm cuts not recom.
Cricut Embossing Folders	Basic	>1"	Deep Cut	4	3	4 – 5	May need Multi-Cut (2)
Cricut Paper	Basic	>1"	Regular	6	5	5	
Cricut Paper	Intricate	<1"	Regular	5	2	3	
Daisy Bucket	Basic	>1"	Regular	5	4	4	
Daisy Bucket	Intricate	<1"	Regular	4	2	3	
Daisy D's Designer Paper	Basic	>1"	Regular	4	4	3	
Daisy D's Designer Paper	Intricate	<1"	Regular	4	1	2 – 3	
Darice Self-stick holographic paper	Basic	>1"	Regular	5	5	4	
Darice Self-stick holographic paper	Intricate	<1"	Regular	4	2	4	Multi-Cut (2)
DCWV Adhesive CardStock (Cut through)	Basic	>1"	Regular	5	4	5	Multi-Cut (2) if you want it to pop
DCWV Adhesive CardStock (Cut through)	Intricate	<1"	Regular	4	3	4	Multi-Cut (2) if you want it to pop
DCWV Adhesive CardStock (For "kissed cut")	Basic	>1"	Regular	4	3	3 – 4	
DCWV Adhesive CardStock (For "kissed cut")	Intricate	<1"	Regular	3	1	2	
DCWV Paper	Basic	>1"	Regular	6	5	5	
DCWV Paper	Intricate	<1"	Regular	5	2	3	
DCWV Paper / Emboss	Basic	>1"	Regular	6	5	4 – 5	May need Multi-Cut (2)

Cutting Material	Shape Type	Size	Blade Type	Blade Depth	Speed	Pressure	Notes:
DCWV Paper / Emboss	Intricate	<1"	Regular	6	2	4	May need Multi-Cut (2)
DCWV Paper / Glitter	Basic	>1"	Regular	6	4	4 – 5	May need Multi-Cut (2)
DCWV Paper / Glitter	Intricate	<1"	Regular	6	2	4	May need Multi-Cut (2)
DCWV Premium Packs	Basic	>1"	Regular	6	5	5	May need Multi-Cut (2)
DCWV Premium Packs	Intricate	<1"	Regular	6	3	4	
Deja Views	Basic	>1"	Regular	5	5	4 – 5	
Deja Views	Intricate	<1"	Regular	5	2	3	
Doilies Paper	Basic	>1"	Regular	3	2	2 – 3	
Doilies Paper	Intricate	<1"	Regular	3	1	2	
Doodle Bug Designs Velvet	Basic	>1"	Regular	6	5	5	
Doodle Bug Designs Velvet	Intricate	<1"	Regular	5	2 – 3	4	
Doodlebug Designs Sugar Coating	Basic	>1"	Regular	5	5	4	
Doodlebug Designs Sugar Coating	Intricate	<1"	Regular	4	2	4	
Egyptian Papyrus (Thicker Paper)	Basic	>1"	Regular	5	5	4	
Egyptian Papyrus (Thicker Paper)	Intricate	<1"	Regular	5	1 – 2	3	May need Multi-Cut (2)
EK Success Emboss	Basic	>1"	Regular	5	5	4 – 5	
EK Success Emboss	Intricate	<1"	Regular	5	3	4	
EK Success Inspirables	Basic	>1"	Regular	4	4	4	
EK Success Inspirables	Intricate	<1"	Regular	4	2	3	
Embroidered Paper	Basic	>1"	Regular	5	4 – 5	3 – 4	
Embroidered Paper	Intricate	<1"	Regular	4	2	2 – 3	May need Multi-Cut (2)
Essentials Paperz	Basic	>1"	Regular	5	4	5	
Essentials Paperz	Intricate	<1"	Regular	4	2	3	
Expressions Paper Craft	Basic	>1"	Regular	5	5	4 – 5	
Expressions Paper Craft	Intricate	<1"	Regular	5	2	3	
Fabric (Light weight fabrics Using Stiffy)	Basic	>1"	Regular	4	2	3 – 4	
Fabric (Light weight fabrics Using Stiffy)	Intricate	<1"	Regular	3 – 4	2	3	
Fabric Iron On Adhesive	Basic	>1"	Regular	4	3	4	
Fabric Iron On Adhesive	Intricate	<1"	Regular	3	2	3 – 4	

Cutting Material	Shape Type	Size	Blade Type	Blade Depth	Speed	Pressure	Notes:
Fancy Pants Designs	Basic	>1"	Regular	5	5	4 – 5	
Fancy Pants Designs	Intricate	<1"	Regular	4	2	3	
Felt (thin only)	Basic	>1"	Deep Cut	4	3	4	Tape all sides down
Felt (thin only)	Intricate	<1"	Deep Cut	3	2	3 – 4	Tape all sides down
Fiskars	Basic	>1"	Regular	5	5	4	
Fiskars	Intricate	<1"	Regular	4	2	3	
Flair Designs	Basic	>1"	Regular	5	5	4	
Flair Designs	Intricate	<1"	Regular	4	2	3	
Foofala	Basic	>1"	Regular	4	3	4	
Foofala	Intricate	<1"	Regular	3	2	3 – 4	
Freezer Paper for T-Shirt Stencils	Intricate	<1"	Regular	3	1	2	Use caution; small cuts tear easily
Freezer Paper for T-Shirt Stencils	Basic	>1"	Regular	3	3	2	
Fun Foam	Basic	>1"	Deep Cut	5	4	4	Multi-Cut (3) – Foam will squish in rollers
Fun Foam	Intricate	<1"	Deep Cut	5	2	4	Multi-Cut (3) – Foam will squish in rollers
Gartner Studios Paper	Basic	>1"	Regular	5	5	4	
Gartner Studios Paper	Intricate	<1"	Regular	4	2	3	
GCD Studios	Basic	>1"	Regular	4	4	3	
GCD Studios	Intricate	<1"	Regular	4	1 – 2	3	
GCI Studios	Basic	>1"	Regular	4	4	3	
GCI Studios	Intricate	<1"	Regular	4	1	2 – 3	May need Multi-Cut (2)
Georgia Pacific Card Stock	Basic	>1"	Regular	5	5	4	May need Multi-Cut (2)
Georgia Pacific Card Stock	Intricate	<1"	Regular	4	2	3 – 4	May need Multi-Cut (2)
Georgia Pacific Printer Paper	Basic	>1"	Regular	5	4	4	
Georgia Pacific Printer Paper	Intricate	<1"	Regular	3	1	2	
Glitter Vinyl	Basic	>1"	Regular	5	5	5	Multi-Cut (2)
Glitter Vinyl	Intricate	<1"	Regular	5	2	3	Multi-Cut (2 or 3)
Glitz Designs	Basic	>1"	Regular	5	5	4	
Glitz Designs	Intricate	<1"	Regular	4	2	4	
Grafix Clear Plastic Sheets	Basic	>1"	Deep Cut	3 – 4	3 – 4	4	Multi-Cut (2 or 3)

Cutting Material	Shape Type	Size	Blade Type	Blade Depth	Speed	Pressure	Notes:
Grafix Clear Plastic Sheets	Intricate	<1"	Deep Cut	3	2 – 3	4	Multi-Cut (3 or 4)
Grafix Shrink Film	Basic	>1"	Deep Cut	6	5	5	Multi-Cut (3)
Grafix Shrink Film	Intricate	<1"	Deep Cut	5	1 – 2	4	Multi-Cut (4)
Grunge Paper	Basic	>1"	Deep Cut	6	5	4	Multi-Cut (2)
Grunge Paper	Intricate	<1"	Deep Cut	4	2	3	Multi-Cut (3)
Hambly	Basic	>1"	Regular	5	4 – 5	4	
Hambly	Intricate	<1"	Regular	5	3	5	
Heidi Grace (Fiskars)	Basic	>1"	Regular	4	5	4	
Heidi Grace (Fiskars)	Intricate	<1"	Regular	4	1 – 2	3	
Heidi Grace (Fiskars) Embossed	Basic	>1"	Regular	4	5	4	
Heidi Grace (Fiskars) Embossed	Intricate	<1"	Regular	4	1 – 2	3	
Heidi Grace (Fiskars) Flocking	Basic	>1"	Regular	5	5	4	
Heidi Grace (Fiskars) Flocking	Intricate	<1"	Regular	4	1 – 2	3	May need Multi-Cut (2)
Heidi Grace (Fiskars) Glitter	Basic	>1"	Regular	5	5	4	
Heidi Grace (Fiskars) Glitter	Intricate	<1"	Regular	5	1 – 2	3	May need Multi-Cut (2)
Hemp Lace Paper	Basic	>1"	Regular	4	3	3 – 4	
Hemp Lace Paper	Intricate	<1"	Regular	4	1 – 2	2 – 3	
Hero Arts Design Paper	Basic	>1"	Regular	6	5	5	
Hero Arts Design Paper	Intricate	<1"	Regular	5	2	2	
Hero Arts Solid Paper	Basic	>1"	Regular	6	5	5	
Hero Arts Solid Paper	Intricate	<1"	Regular	5	2	2	
Hot Off the Press	Basic	>1"	Regular	5	4 – 5	4	
Hot Off the Press	Intricate	<1"	Regular	5	2	5	
Hot Off the Press Foil	Basic	>1"	Regular	5	5	4 – 5	
Hot Off the Press Foil	Intricate	<1"	Regular	4	1 – 2	3	May need Multi-Cut (2)
Hot Off the Press Metallics	Basic	>1"	Regular	5	5	4 – 5	
Hot Off the Press Metallics	Intricate	<1"	Regular	4	3	3	May need Multi-Cut (2)
Hot Off the Press Shine Designs	Basic	>1"	Regular	5	5	4 – 5	
Hot Off the Press Shine Designs	Intricate	<1"	Regular	4	2 – 3	3	May need Multi-Cut (2)

Cutting Material	Shape Type	Size	Blade Type	Blade Depth	Speed	Pressure	Notes:
Hot Off the Press Vellum	Basic	>1"	Regular	3 – 4	4	2	
Hot Off the Press Vellum	Intricate	<1"	Regular	3 – 4	1	2	Use Caution!
HP Printer Paper	Basic	>1"	Regular	5	4	4	
HP Printer Paper	Intricate	<1"	Regular	3	1	2	
Imaginisce	Basic	>1"	Regular	6	5	5	
Imaginisce	Intricate	<1"	Regular	5	1 – 2	2	May need Multi-Cut (2)
Japanese Origami Paper	Basic	>1"	Regular	4	3	3	
Japanese Origami Paper	Intricate	<1"	Regular	4	1	2	
Japanese Yuzen Chiyogami	Basic	>1"	Regular	4	5	4	
Japanese Yuzen Chiyogami	Intricate	<1"	Regular	4	1 – 2	3	May need Multi-Cut (2)
Jenni Bowlin	Basic	>1"	Regular	5	4	4	
Jenni Bowlin	Intricate	<1"	Regular	3	1	2	
Jillibean Soup Paper	Basic	>1"	Regular	6	5	5	
Jillibean Soup Paper	Intricate	<1"	Regular	5	1 – 2	2	May need Multi-Cut (2)
Junkitz Designer Card Stock	Basic	>1"	Regular	5	4	5	
Junkitz Designer Card Stock	Intricate	<1"	Regular	4	2	3	
Junkitz Junk Padz	Basic	>1"	Regular	4	4 – 5	4	
Junkitz Junk Padz	Intricate	<1"	Regular	4	2 – 3	3 – 4	
K&Company Designer Paper Packs	Basic	>1"	Regular	5	4 – 5	4	
K&Company Designer Paper Packs	Intricate	<1"	Regular	5	3	5	
K&Company Recycled Double Sided	Basic	>1"	Regular	6	5	5	
K&Company Recycled Double Sided	Intricate	<1"	Regular	5	2 – 3	5	
Kaiser Scrapbook	Basic	>1"	Regular	6	5	5	
Kaiser Scrapbook	Intricate	<1"	Regular	5	2 – 3	5	
Kanban Paper	Basic	>1"	Regular	5	5	5	Multi-Cut (2)
Kanban Paper	Intricate	<1"	Regular	5	2	3	Multi-Cut (2 or 3)
Kanban Paper Vellum	Basic	>1"	Regular	4	2	2	Multi-Cut (2)
Kanban Paper Vellum	Intricate	<1"	Regular	4	1 – 2	2	Multi-Cut (2)
Karen Foster Designs	Basic	>1"	Regular	5	5	4 – 5	

Cutting Material	Shape Type	Size	Blade Type	Blade Depth	Speed	Pressure	Notes:
Karen Foster Designs	Intricate	<1"	Regular	4	1 – 2	3	
ki Memories Designer Paper Pads	Basic	>1"	Regular	4	3	4	
ki Memories Designer Paper Pads	Intricate	<1"	Regular	3	2	3	
ki Memories Sheer Delights	Basic	>1"	Regular	6	5	4	
ki Memories Sheer Delights	Intricate	<1"	Regular	6	2	3	
Kraft Cardstock	Basic	>1"	Regular	5	5	4	Multi-Cut (2)
Kraft Cardstock	Intricate	<1"	Regular	4	2	3	Multi-Cut (3)
Lace Paper	Basic	>1"	Regular	4	3	3 – 4	
Lace Paper	Intricate	<1"	Regular	4	1	2	
Lacey Card Stock	Basic	>1"	Regular	4	2	3	
Lacey Card Stock	Intricate	<1"	Regular	4	1	2	
Little Yellow Bicycle	Basic	>1"	Regular	5	5	4 – 5	
Little Yellow Bicycle	Intricate	<1"	Regular	4	2	3	
Lokta Crinkle Paper	Basic	>1"	Regular	5	5	4	
Lokta Crinkle Paper	Intricate	<1"	Regular	4	1	2	May need Multi-Cut (2)
Lokta Marble Paper	Basic	>1"	Regular	5	5	4	
Lokta Marble Paper	Intricate	<1"	Regular	4	1	2	May need Multi-Cut (2)
Lokta Paper	Basic	>1"	Regular	5	4	4	
Lokta Paper	Intricate	<1"	Regular	4	1	2	May need Multi-Cut (2)
Lokta Recycled Paper	Basic	>1"	Regular	5	5	4	
Lokta Recycled Paper	Intricate	<1"	Regular	4	1	2	May need Multi-Cut (2)
Love Elsie	Basic	>1"	Regular	5	5	4	
Love Elsie	Intricate	<1"	Regular	5	1 – 2	3	
Love Elsie Fabric Paper	Basic	>1"	Deep Cut	6	2 – 3	3 – 4	
Love Elsie Fabric Paper	Intricate	<1"	Regular	-	-	-	Don't Do! Never got a clean cut.
Love Elsie Transparencies	Basic	>1"	Regular	6	3	4	May need Multi-Cut (2)
Love Elsie Transparencies	Intricate	<1"	Regular	5	2	4	May need Multi-Cut (2)
Luxe Designs	Basic	>1"	Regular	5	4	4	
Luxe Designs	Intricate	<1"	Regular	4	1 – 2	3	

Cutting Material	Shape Type	Size	Blade Type	Blade Depth	Speed	Pressure	Notes:
Magnet Sheets	Basic	>1"	Deep Cut	6	3	5	Multi-Cut (4) usually required
Magnet Sheets	Intricate	<1"	Deep Cut	6	2 – 3	4 – 5	Multi-Cut (4) usually required
Making Memories	Basic	>1"	Regular	5	5	4 – 5	
Making Memories	Intricate	<1"	Regular	5	1	2	
Mara Mi Design Paper	Basic	>1"	Regular	5	5	4 – 5	
Mara Mi Design Paper	Intricate	<1"	Regular	5	1	2	
Marks Paper Company	Basic	>1"	Regular	6	5	5	
Marks Paper Company	Intricate	<1"	Regular	5	3	3 – 4	
Martha Stewart Double Sided Paper	Basic	>1"	Regular	5	5	4	
Martha Stewart Double Sided Paper	Intricate	<1"	Regular	4	2	4	
Martha Stewart Thin Paper	Intricate	<1"	Regular	3 – 4	1	2	Use spatula to get off mat!
Martha Stewart Thin Paper	Basic	>1"	Regular	4	2	3	
Maya Road	Basic	>1"	Regular	5	5	4	
Maya Road	Intricate	<1"	Regular	4	2	3	Multi-Cut (2)
Me and My Big Ideas Paper	Basic	>1"	Regular	5	5	4	
Me and My Big Ideas Paper	Intricate	<1"	Regular	5	2 – 3	4	
Me and My Big Ideas Paper / Emboss	Basic	>1"	Regular	5	5	4 – 5	May need Multi-Cut (2)
Me and My Big Ideas Paper / Emboss	Intricate	<1"	Regular	5	3	4	May need Multi-Cut (2)
Me and My Big Ideas Paper / Flocking	Basic	>1"	Regular	5	4	4	
Me and My Big Ideas Paper / Flocking	Intricate	<1"	Regular	5	2	4	
Me and My Big Ideas Paper / Foil	Basic	>1"	Regular	5	5	4 – 5	
Me and My Big Ideas Paper / Foil	Intricate	<1"	Regular	5	3	4	
Me and My Big Ideas Paper / Glitter	Basic	>1"	Regular	4	4	4	May need Multi-Cut (2)
Me and My Big Ideas Paper / Glitter	Intricate	<1"	Regular	4	2	3	May need Multi-Cut (2)
Me and My Big Ideas Paper / Pearlescent	Basic	>1"	Regular	5	4 – 5	4 – 5	
Me and My Big Ideas Paper / Pearlescent	Intricate	<1"	Regular	5	2	4	
Me and My Big Ideas Paper / UV	Basic	>1"	Regular	5	5	4 – 5	
Me and My Big Ideas Paper / UV	Intricate	<1"	Regular	5	3	4	
Me and My Big Ideas Velvet	Basic	>1"	Regular	5	4	4 – 5	

Cutting Material	Shape Type	Size	Blade Type	Blade Depth	Speed	Pressure	Notes:
Me and My Big Ideas Velvet	Intricate	<1"	Regular	5	2	4	
Melissa Frances	Basic	>1"	Regular	5	5	4 – 5	
Melissa Frances	Intricate	<1"	Regular	5	1	2	
Memory Stitches	Basic	>1"	Regular	5	5	4	
Memory Stitches	Intricate	<1"	Regular	4	2	4	
Momenta	Basic	>1"	Regular	5	4 – 5	4	
Momenta	Intricate	<1"	Regular	5	3	5	
Momenta Embossed Metallics	Basic	>1"	Regular	5	4 – 5	5	
Momenta Embossed Metallics	Intricate	<1"	Regular	5	3	3 – 4	May need Multi-Cut (2)
Momenta Textured Card Stock	Basic	>1"	Regular	5	4 – 5	4	
Momenta Textured Card Stock	Intricate	<1"	Regular	5	3	5	
Momenta Treated Paper	Basic	>1"	Regular	5	4 – 5	4	
Momenta Treated Paper	Intricate	<1"	Regular	5	2 – 3	4	
Moxxie	Basic	>1"	Regular	5	5	4	
Moxxie	Intricate	<1"	Regular	4	1	2	May need Multi-Cut (2)
Mulberry Paper	Basic	>1"	Regular	3 – 4	3	2	Delicate; use caution and STICKY mat
Mulberry Paper	Intricate	<1"	Regular	3 – 4	1	1	Delicate; use caution and STICKY mat
My Little Shoe Box	Basic	>1"	Regular	5	5	4	
My Little Shoe Box	Intricate	<1"	Regular	4	2	3	
My Minds Eye Card Stock	Basic	>1"	Regular	5	5	4	
My Minds Eye Card Stock	Intricate	<1"	Regular	5	2 – 3	4	
My Minds Eye Designer Paper	Basic	>1"	Regular	5	5	4	
My Minds Eye Designer Paper	Intricate	<1"	Regular	4	1	2	May need Multi-Cut (2)
My Minds Eye Emboss Paper	Basic	>1"	Regular	5	5	4	
My Minds Eye Emboss Paper	Intricate	<1"	Regular	4	1	2	May need Multi-Cut (2)
My Minds Eye Foil	Basic	>1"	Regular	5	5	4	
My Minds Eye Foil	Intricate	<1"	Regular	4	1	2	May need Multi-Cut (2)
Narratives	Basic	>1"	Regular	5	5	4	
Narratives	Intricate	<1"	Regular	4	2	4	

Cutting Material	Shape Type	Size	Blade Type	Blade Depth	Speed	Pressure	Notes:
Nicole Quality Designer Paper	Basic	>1"	Regular	5	5	4	
Nicole Quality Designer Paper	Intricate	<1"	Regular	4	1	2	May need Multi-Cut (2)
Nicole Quality Paper	Basic	>1"	Regular	5	5	4	
Nicole Quality Paper	Intricate	<1"	Regular	5	2 – 3	4	
Nicole Quality Paper Embossed	Basic	>1"	Regular	5	5	4	
Nicole Quality Paper Embossed	Intricate	<1"	Regular	5	2 – 3	4	
Nicole Quality Paper Foil	Basic	>1"	Regular	5	5	4	
Nicole Quality Paper Foil	Intricate	<1"	Regular	5	2 – 3	4	
Note Book Paper	Basic	>1"	Regular	3	4	3	
Note Book Paper	Intricate	<1"	Regular	3	1	2	
NRN Designs (Smooth Thick Paper)	Basic	>1"	Regular	4	4 – 5	4	
NRN Designs (Smooth Thick Paper)	Intricate	<1"	Regular	4	2 – 3	3	May need Multi-Cut (2)
October Afternoon	Basic	>1"	Regular	5	5	4	
October Afternoon	Intricate	<1"	Regular	4	2	3	
Overton House Designs	Basic	>1"	Regular	5	5	4	
Overton House Designs	Intricate	<1"	Regular	4	2	3	
Paper Adventures	Basic	>1"	Regular	5	5	4	
Paper Adventures	Intricate	<1"	Regular	4	2	3	
Paper from Dictionary/Old Books	Basic	>2"	Regular	3	1	2 – 3	Multi-Cut (2) on cuts bigger than 2"
Paper from Dictionary/Old Books	Intricate	<2"	Regular	very tricky	-	-	Never got a successful cut
Paper Pizazz	Basic	>1"	Regular	4	5	4	
Paper Pizazz	Intricate	<1"	Regular	4	2 – 3	3	
Paper Reflections	Basic	>1"	Regular	5	4	4	
Paper Reflections	Intricate	<1"	Regular	4	2	3	
Paper Salon	Basic	>1"	Regular	4	4 – 5	5	
Paper Salon	Intricate	<1"	Regular	3	1	3	
Paper Trey Ink Cardstock	Basic	>1"	Regular	5	5	5	Multi-Cut (2)
Paper Trey Ink Cardstock	Intricate	<1"	Regular	4	2	3	Multi-Cut (2)
Paper Trey Ink Designer	Basic	>1"	Regular	4	3 – 4	4	May need Multi-Cut (2)

Cutting Material	Shape Type	Size	Blade Type	Blade Depth	Speed	Pressure	Notes:
Paper Trey Ink Designer	Intricate	<1"	Regular	3	2 – 3	4	Multi-Cut (2)
Photo Paper	Basic	>1"	Regular	4	3	4	
Photo Paper	Intricate	<1"	Regular	4	2	3	
Photo Prints (Walmart, Target, Shutterfly, etc)	Basic	>1"	Regular	4	3	5	
Photo Prints (Walmart, Target, Shutterfly, etc)	Intricate	<1"	Regular	4	2	4	
Piggytales	Basic	>1"	Regular	5	5	4	
Piggytales	Intricate	<1"	Regular	4	2	3	
Pink Paislee	Basic	>1"	Regular	5	5	4	
Pink Paislee	Intricate	<1"	Regular	4	2	3	
Plastic Backings (Like Cricut Mat Covers)	Basic	>1"	Regular	6	4	5	
Plastic Backings (Like Cricut Mat Covers)	Intricate	<1"	Regular	6	2	4	
Post It Paper Adhesive Back	Basic	>1"	Regular	-	-	-	
Post It Paper Adhesive Back	Intricate	<1"	Regular	-	-	-	
Post It Paper Adhesive Back Kiss	Basic	>1"	Regular	-	-	-	
Post It Paper Adhesive Back Kiss	Intricate	<1"	Regular	-	-	-	
Poster Board	Basic	>1"	Deep Cut	6	4 – 5	3 – 4	Multi-Cut (4) usually required
Poster Board	Intricate	<1"	Deep Cut	6	2 – 3	2 – 3	Multi-Cut (4) usually required
Prima Marketing	Basic	>1"	Regular	5	5	4	
Prima Marketing	Intricate	<1"	Regular	4	1	3	
Prismatic	Basic	>1"	Regular	5	5	4	
Prismatic	Intricate	<1"	Regular	5	2	3	
Prove Craft Stencil Material	Basic	>1"	Deep Cut	6	3	5	Tape all sides - Multi-Cut (2)
Prove Craft Stencil Material	Intricate	<1"	Deep Cut	5	2	4	Tape all sides - Multi-Cut (2)
Prove Craft Stencil Material	Basic	>1"	Regular	6	3	5	
Prove Craft Stencil Material	Intricate	<1"	Regular	6	2	4 – 5	
Recollections Metallic Paper	Basic	>1"	Regular	5	5	4	
Recollections Metallic Paper	Intricate	<1"	Regular	4	2	4	Multi-Cut (2)
Recollections Patterned	Basic	>1"	Regular	5	5	4	
Recollections Patterned	Intricate	<1"	Regular	4	2	3	

Cutting Material	Shape Type	Size	Blade Type	Blade Depth	Speed	Pressure	Notes:
Recollections Solid	Basic	>1"	Regular	5	5	4	
Recollections Solid	Intricate	<1"	Regular	4	2	3	
Recollections Specialty	Basic	>1"	Regular	5	5	4	
Recollections Specialty	Intricate	<1"	Regular	4	2	3	
Reminisce Designer Paper	Basic	>1"	Regular	5	5	4	
Reminisce Designer Paper	Intricate	<1"	Regular	4	2	3	
Rice Paper	Basic	>1"	Regular	5	5	4	
Rice Paper	Intricate	<1"	Regular	4	1	2	May need Multi-Cut (2)
Rusty Pickle	Basic	>1"	Regular	4	5	4	
Rusty Pickle	Intricate	<1"	Regular	4	2	3	May need Multi-Cut (2)
s.e.i Paper	Basic	>1"	Regular	4	4	4	
s.e.i Paper	Intricate	<1"	Regular	4	2	3	
s.e.i. Foil	Basic	>1"	Regular	5	5	4 – 5	
s.e.i. Foil	Intricate	<1"	Regular	5	3	4	
s.e.i. Glizma (Glitter paper)	Basic	>1"	Regular	4	4	4	
s.e.i. Glizma (Glitter paper)	Intricate	<1"	Regular	4	2	3	
s.e.i. Pearled	Basic	>1"	Regular	5	4 – 5	4 – 5	
s.e.i. Pearled	Intricate	<1"	Regular	5	2	4	
s.e.i. Textured Paper	Basic	>1"	Regular	5	5	5	
s.e.i. Textured Paper	Intricate	<1"	Regular	5	3	4	
Sandy Lion	Basic	>1"	Regular	5	4 – 5	4	
Sandy Lion	Intricate	<1"	Regular	5	2	3 – 4	
Sassafras Lass	Basic	>1"	Regular	5	4 – 5	4	
Sassafras Lass	Intricate	<1"	Regular	5	1 – 2	3	May need Multi-Cut (2)
Scenic Route	Basic	>1"	Regular	3	4 – 5	5	
Scenic Route	Intricate	<1"	Regular	3	1	3	May need Multi-Cut (2)
Scor-Tape (6"x6" sheets)	Basic	>1"	Regular	5	3 – 4	4	
Scor-Tape (6"x6" sheets)	Intricate	<1"	Regular	5	1 – 2	4	
Scotch Blue Painters Tape	Basic	>1"	Regular	3 – 4	4	4	

Cutting Material	Shape Type	Size	Blade Type	Blade Depth	Speed	Pressure	Notes:
Scotch Blue Painters Tape	Intricate	<1"	Regular	3	2	3 – 4	
Scrap With Reach	Basic	>1"	Regular	6	5	5	
Scrap With Reach	Intricate	<1"	Regular	5	1 – 2	2 – 3	May need Multi-Cut (2)
Scrapbooking – Target Brand Paper	Basic	>1"	Regular	4	4	3	
Scrapbooking – Target Brand Paper	Intricate	<1"	Regular	4	2	3	
Scrappin' Sports	Basic	>1"	Regular	6	5	5	
Scrappin' Sports	Intricate	<1"	Regular	6	1 – 2	2 – 3	May need Multi-Cut (2)
Scrappin' Sports Emboss	Basic	>1"	Regular	6	5	5	
Scrappin' Sports Emboss	Intricate	<1"	Regular	6	1 – 2	2 – 3	May need Multi-Cut (2)
Scrappin' Sports Foil	Basic	>1"	Regular	6	4	5	
Scrappin' Sports Foil	Intricate	<1"	Regular	6	1	2	May need Multi-Cut (2)
Shrink Paper	Basic	>1"	Deep Cut	6	2 – 3	4	Haven't tested less than 1"; it shrinks! :)
Shrink Paper	Intricate	<1"	Regular	-	-	-	I never did intricate or less than 1" because it shrinks! :)
Silk Blend Paper	Basic	>1"	Regular	5	4 – 5	3 – 4	
Silk Blend Paper	Intricate	<1"	Regular	4	2	2 – 3	
Sizzix Little Sizzles	Basic	>1"	Regular	5	5	4	
Sizzix Little Sizzles	Intricate	<1"	Regular	4	2	4	
Sizzles Texture	Basic	>1"	Regular	6	5	5	
Sizzles Texture	Intricate	<1"	Regular	4 – 5	2	4	
Soft Silk Paper	Basic	>1"	Regular	3 – 4	2	3	
Soft Silk Paper	Intricate	<1"	Regular	3 – 4	1	2	Use caution and patience; tears easily
Stampin' Station	Basic	>1"	Regular	5	5	4 – 5	
Stampin' Station	Intricate	<1"	Regular	5	2	2	Multi-Cut (2)
Stampin' Station	Basic	>1"	Regular	5	5	5	
Stampin' Station	Intricate	<1"	Regular	4	2	3 – 4	Multi-Cut (2)
Stampin' Up Card Stock	Basic	>1"	Regular	5	5	4 – 5	
Stampin' Up Card Stock	Intricate	<1"	Regular	5	2	3	Multi-Cut (2)
Stardream Metallic Paper	Basic	>1"	Regular	6	5	5	
Stardream Metallic Paper	Intricate	<1"	Regular	5	1 – 2	2 – 3	May need Multi-Cut (2)

Cutting Material	Shape Type	Size	Blade Type	Blade Depth	Speed	Pressure	Notes:
Stardream Paper	Basic	>1"	Regular	6	5	5	
Stardream Paper	Intricate	<1"	Regular	5	1 – 2	2 – 3	May need Multi-Cut (2)
Teresa Collins	Basic	>1"	Regular	4	4 – 5	5	
Teresa Collins	Intricate	<1"	Regular	4	1 – 2	3 – 4	This paper is great for intricate work
The Paper Company	Basic	>1"	Regular	5	5	4	
The Paper Company	Intricate	<1"	Regular	5	1 – 2	2	May need Multi-Cut (2)
The Robbin's Nest	Basic	>1"	Regular	5	5	4	
The Robbin's Nest	Intricate	<1"	Regular	5	1 – 2	1	May need Multi-Cut (2)
The Write Stuff	Basic	>1"	Regular	5	4 – 5	3 – 4	
The Write Stuff	Intricate	<1"	Regular	4	2	3	
Three Bugs in a Rug	Basic	>1"	Regular	5	5	4	
Three Bugs in a Rug	Intricate	<1"	Regular	4	2	3	
Tibetan Batik	Basic	>1"	Regular	4	4 – 5	4	May need Multi-Cut (2)
Tibetan Batik	Intricate	<1"	Regular	4	2	3	May need Multi-Cut (2)
Tim Holtz Grunge Board	Basic	>1"	Deep Cut	5	4 – 5	4	Multi-Cut (3)
Tim Holtz Grunge Board	Intricate	<1"	Deep Cut	4	3	3 – 4	Multi-Cut (4) usually required
Time Flies Designs	Basic	>1"	Regular	5	4 – 5	3 – 4	
Time Flies Designs	Intricate	<1"	Regular	4	2	3	
Tinkering Ink	Basic	>1"	Regular	5	4 – 5	3 – 4	
Tinkering Ink	Intricate	<1"	Regular	4	2	3	
To The Nines	Basic	>1"	Regular	4	4 – 5	4	May need Multi-Cut (2)
To The Nines	Intricate	<1"	Regular	4	2	3	May need Multi-Cut (2)
TPC Studio	Basic	>1"	Regular	5	4 – 5	3 – 4	
TPC Studio	Intricate	<1"	Regular	4	2	3	May need Multi-Cut (2)
Transparencies	Basic	>1"	Regular	6	3	4 – 5	Multi-Cut (3) Maybe Required
Transparencies	Intricate	<1"	Regular	5	2	3 – 4	Multi-Cut (3) Maybe Required
Urban Lily	Basic	>1"	Regular	4	4 – 5	4	
Urban Lily	Intricate	<1"	Regular	4	1	3	
Vellum	Basic	<1"	Regular	4	3	3	

Cutting Material	Shape Type	Size	Blade Type	Blade Depth	Speed	Pressure	Notes:
Vellum	Intricate	>1"	Regular	4	1	2	Use caution and patience; tears easily
Velvet/Felt Like Paper	Basic	>1"	Regular	6	5	5	
Velvet/Felt Like Paper	Intricate	<1"	Regular	5	2	4 – 5	
Vinyl (Cut through)	Basic	>1"	Regular	4	3	3	
Vinyl (Cut through)	Intricate	<1"	Regular	4	2	3	
Vinyl (kissed cut)	Basic	>1"	Regular	3	2 – 3	2	
Vinyl (kissed cut)	Intricate	<1"	Regular	3	1	2	
Washi	Basic	>1"	Regular	4	3	3	
Washi	Intricate	<1"	Regular	4	1	2	
Wausau Paper	Basic	>1"	Regular	4	3	3	
Wausau Paper	Intricate	<1"	Regular	4	1	2	
We R Memory Keepers	Basic	>1"	Regular	6	5	5	
We R Memory Keepers	Intricate	<1"	Regular	5	1 – 2	2 – 3	May need Multi-Cut (2)
We R Memory Keepers Metallic Paper	Basic	>1"	Regular	6	5	5	
We R Memory Keepers Metallic Paper	Intricate	<1"	Regular	5	1 – 2	2 – 3	May need Multi-Cut (2)
We R Memory Keepers White Out Paper	Basic	>1"	Regular	6	5	5	
We R Memory Keepers White Out Paper	Intricate	<1"	Regular	5	1 – 2	2 – 3	May need Multi-Cut (2)
Webster Pages	Basic	>1"	Regular	5	4 – 5	3 – 4	
Webster Pages	Intricate	<1"	Regular	4	2	3	May need Multi-Cut (2)
Zsiage Desginer Paper	Basic	>1"	Regular	4	4	3 – 4	
Zsiage Desginer Paper	Intricate	<1"	Regular	4	1 – 2	3	May need Multi-Cut (2)

Cricut® is a registered trademark of Provo Craft and Novelties, Inc and is not affiliated with Above Rubies Studio, Ilc.

This guide serves only as a guide and does not guarantee that by using it, you will never rip or tear while cutting paper in your Cricut® machine, even when using the recommended settings. Above Rubies Studio, Ilc will not be liable for any losses or damages you incur while using your Cricut® machine and/or this guide. The content of this guide is solely owned by Above Rubies Studio, Ilc and may not be copied, sold or otherwise redistributed without explicit consent.

Copyright © 2010 Above Rubies Studio, Ilc. All Rights Reserved. www.AboveRubiesStudio.com Questions? Suggestions? Let us know at <http://www.aboverubiesstudio.com/feedback/>

Cutting Material Shape Type Size Blade Type Blade Depth Speed Pressure Notes:

My Custom Settings -----

Intricate >1" Regular

Basic >1" Regular

Intricate <1" Regular

Basic >1" Regular

Intricate <1" Regular

Basic >1" Regular

